

FM 186-2

Small Spill Training



Even Small Drips are Spills

One cup of Gas
is poured on
the concrete



It starts small but quickly spreads



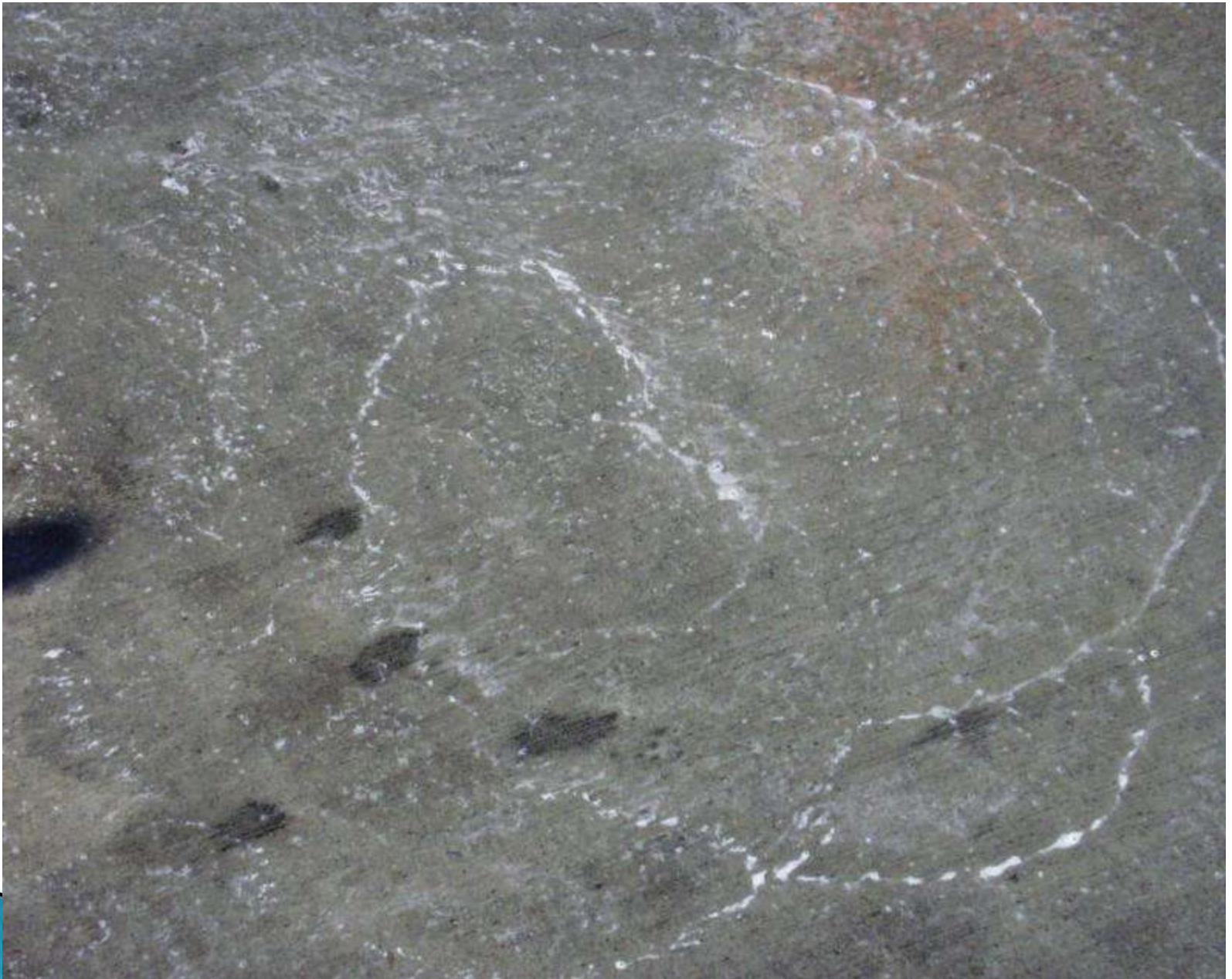
The one cup of gas spreads to about a 3 x 4 foot footprint.



Circle the spill with the FM first, then apply a 1 to 1 solution to cover the entire spill.







Starting from the outside push and pull the material back into the center of the spill

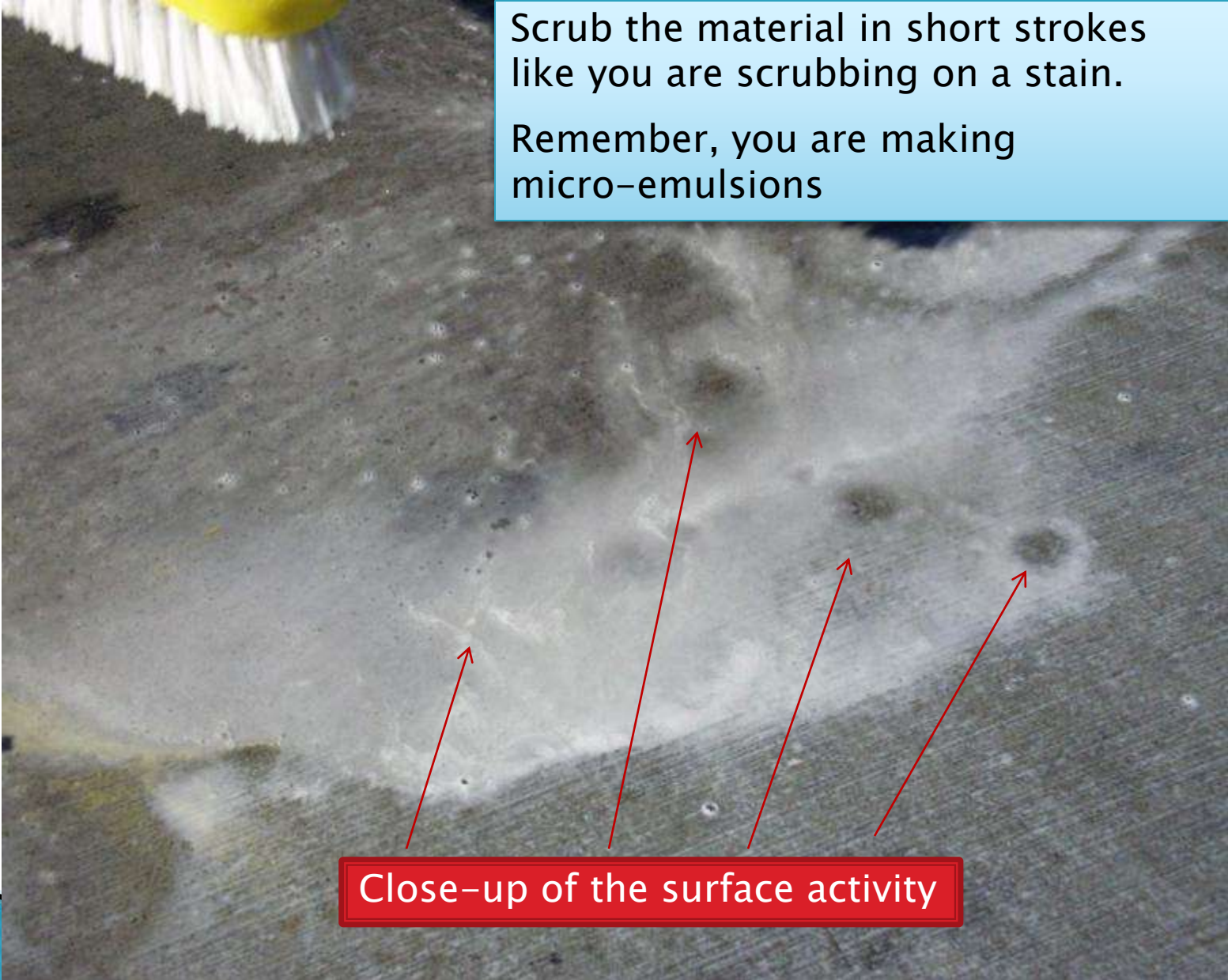


Note the surface activity starting

Keep the spill area
about the same size



Note the surface activity

A close-up photograph showing a yellow-handled brush with white bristles scrubbing a dark, textured surface. The scrubbing action has created a lighter, foamy residue on the surface. A light blue text box is overlaid in the upper right corner, and a red text box with arrows is at the bottom. The background is white with a blue and black decorative shape at the bottom left.

Scrub the material in short strokes
like you are scrubbing on a stain.

Remember, you are making
micro-emulsions

Close-up of the surface activity

Continue scrubbing until the surface activity stops.



Note the surface activity



The solution is complete when it becomes still and homogenized

Cover the entire surface of the spill with pads





And pick up all
of the liquid